

Come valuti il servizio dell'attività ambulatoriale e diagnostica?



87%
6,850 resp.



9%
721 resp.



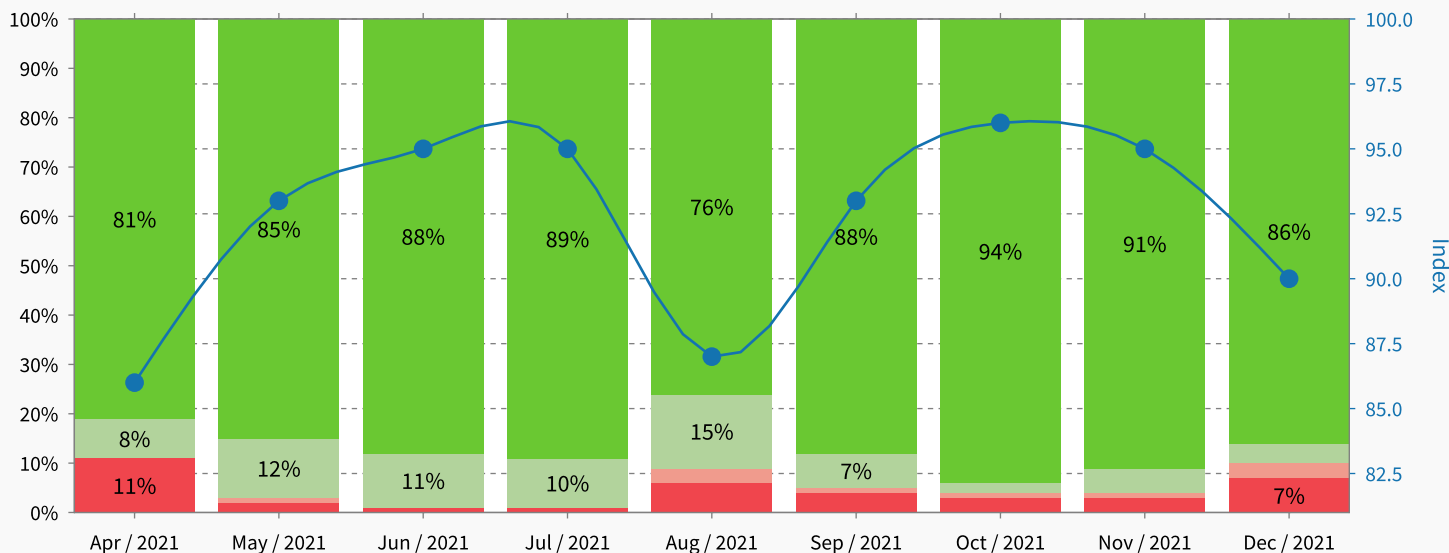
1%
64 resp.



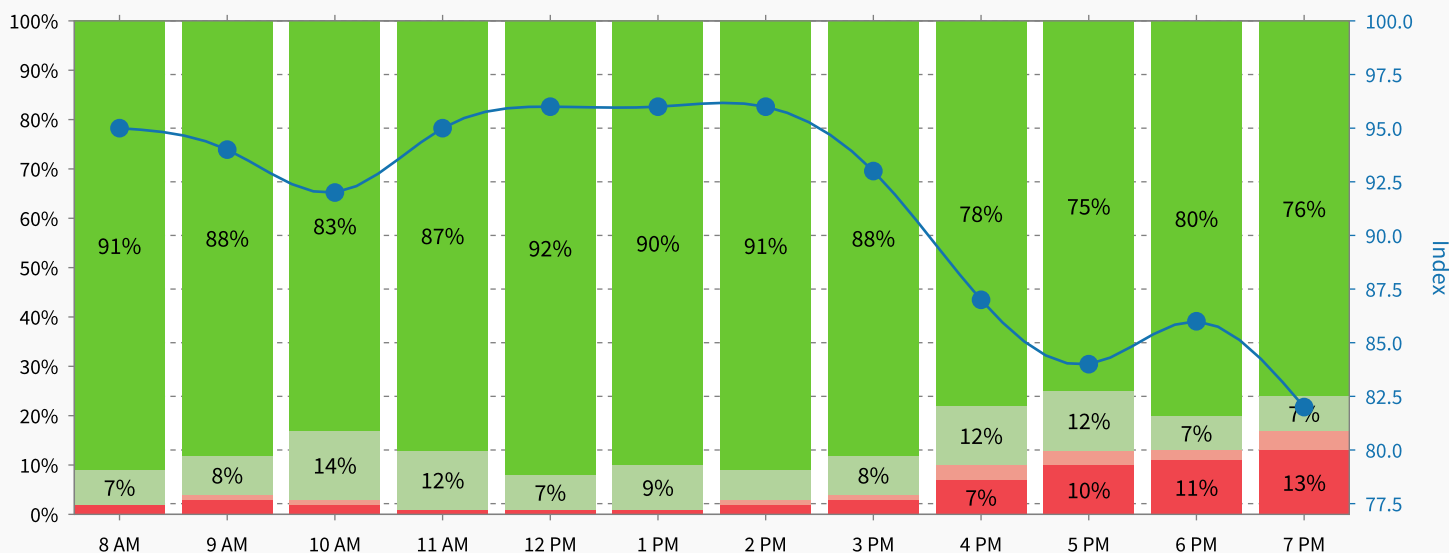
3%
207 resp.

Index: 94.0
Responses: 7,842

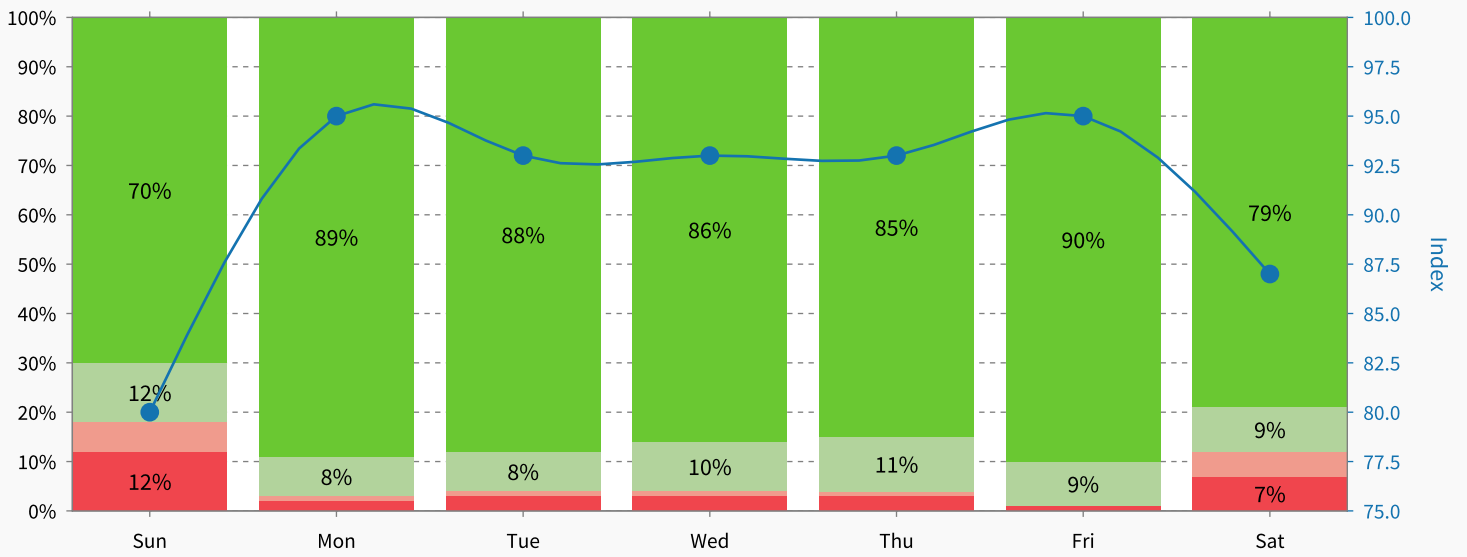
All units combined - monthly distribution



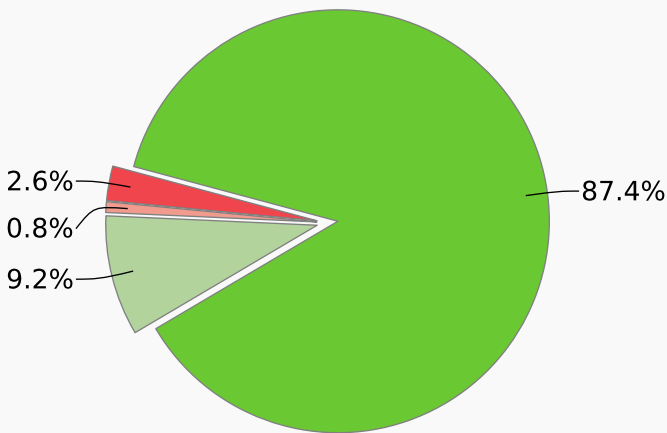
All units combined - hourly distribution



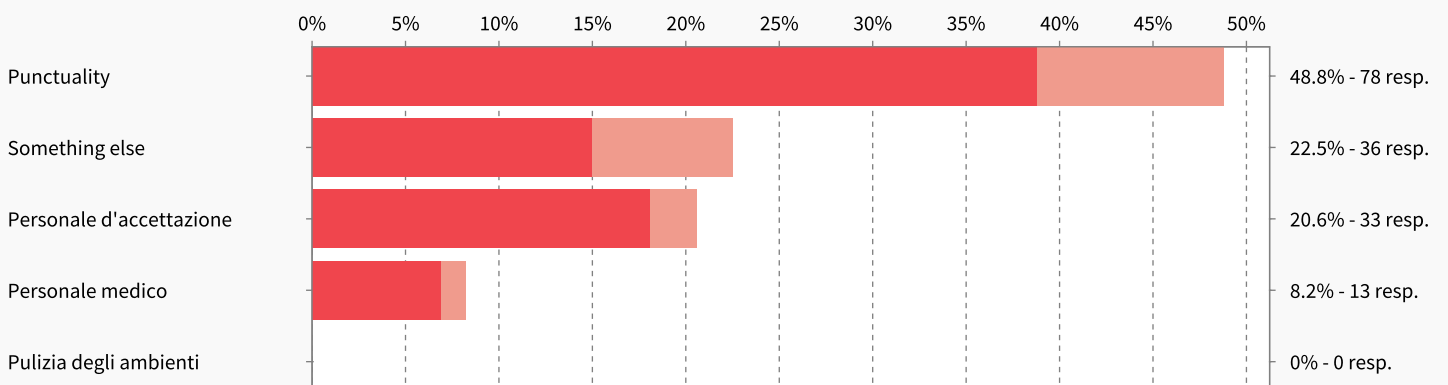
All units combined - weekday distribution



Total results



Pain Points



Highlights

